



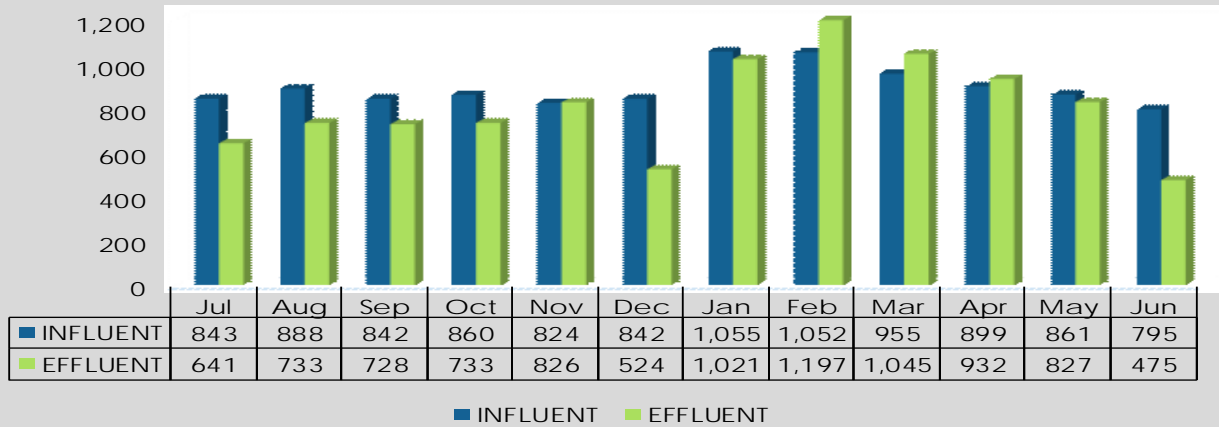
QUARTERLY OPERATIONS REPORT

4th Quarter, April - June 2017

WASTEWATER

PERMIT COMPLIANCE

INFLUENT & EFFLUENT FLOW (MG) Through June 2017



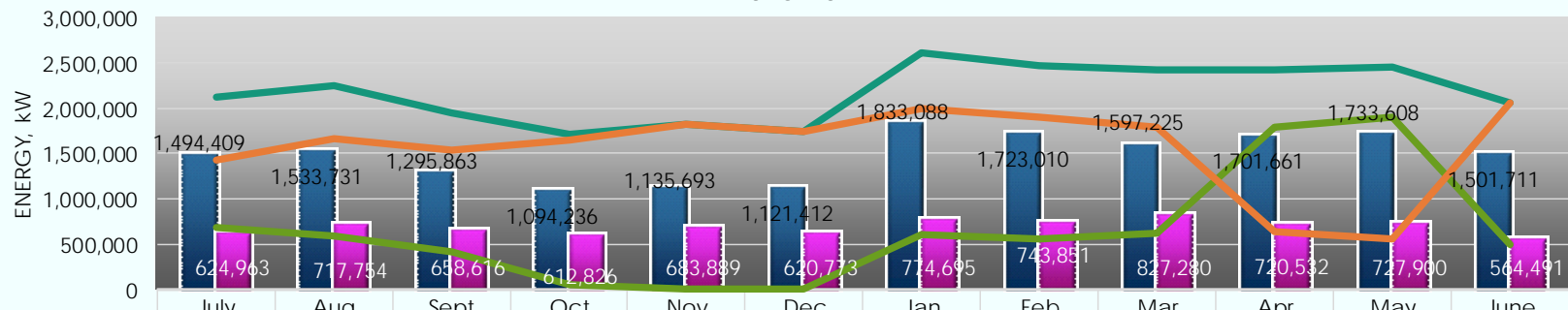
INFLUENT MONTHLY AVERAGE				EFFLUENT MONTHLY AVERAGE									
Month	Flow MGD	CBOD mg/L	TSS mg/L	Month	Flow MGD	CBOD mg/l	cBOD Removal %	TSS mg/l	TSS Removal %	Ammonia* mg/l	Turbidity NTU	pH	Dissolved Oxygen mg/l
				Permit Limit	≤55	<10	>85	<10	>85	≤1.2	<2	6.5-8.5	>6
July	27.2	350	320	July	20.7	<2.1	>99.5	<3.0	>99.2	0.7	1.4	6.7-7.3	7.6
August	28.6	360	320	August	23.6	<2.0	>99.5	<3.2	>99.2	0.7	1.7	6.7-7.7	7.6
September	29	350	320	September	24.3	<2.2	>99.4	<2.6	>99.3	0.6	1.5	6.6-7.5	8.1
October	27.7	330	330	October	23.6	<2.0	>99.5	<2.6	>99.3	0.7	1.6	6.5-7.4	8.7
November	27.5	320	340	November	27.5	<2.0	>94.7	<2.5	>99.2	0.7	1.7	6.5-7.2	9.4
December	27.2	310	320	December	16.9	<2.0	>99.6	<2.8	>99.5	2.6	1.6	6.5-9.3	10.3
January	28.5	340	290	January	34	<2.2	>99.2	<3.7	>98.5	4	1.5	6.5-8.5	8.4
February	37.6	250	290	February	42.75	<2.0	>99.0	<3.2	>98.7	2.4	1.7	6.5-8.5	7.6
March	30.8	280	280	March	33.7	<2.0	>99.2	<2.7	>99.0	<0.6	1.8	6.6-8.6	8.5
April	30	320	290	April	31.1	<2.0	>99.4	<2.7	>99.0	<0.5	1.6	6.6-7.7	8.1
May	27.8	330	290	May	26.7	<2.0	>99.4	<2.6	>99.1	<0.6	1.8	6.5-7.6	7.8
June	26.5	330	320	June	15.8	<2.2	>99.5	<2.8	>99.3	<0.8	1.4	0.0-7.5	6.9

*Seasonal limits exist for Ammonia. Permit limit shown is specific for this reporting period.



WASTEWATER ENERGY CONSUMPTION/PRODUCTION

2016-2017

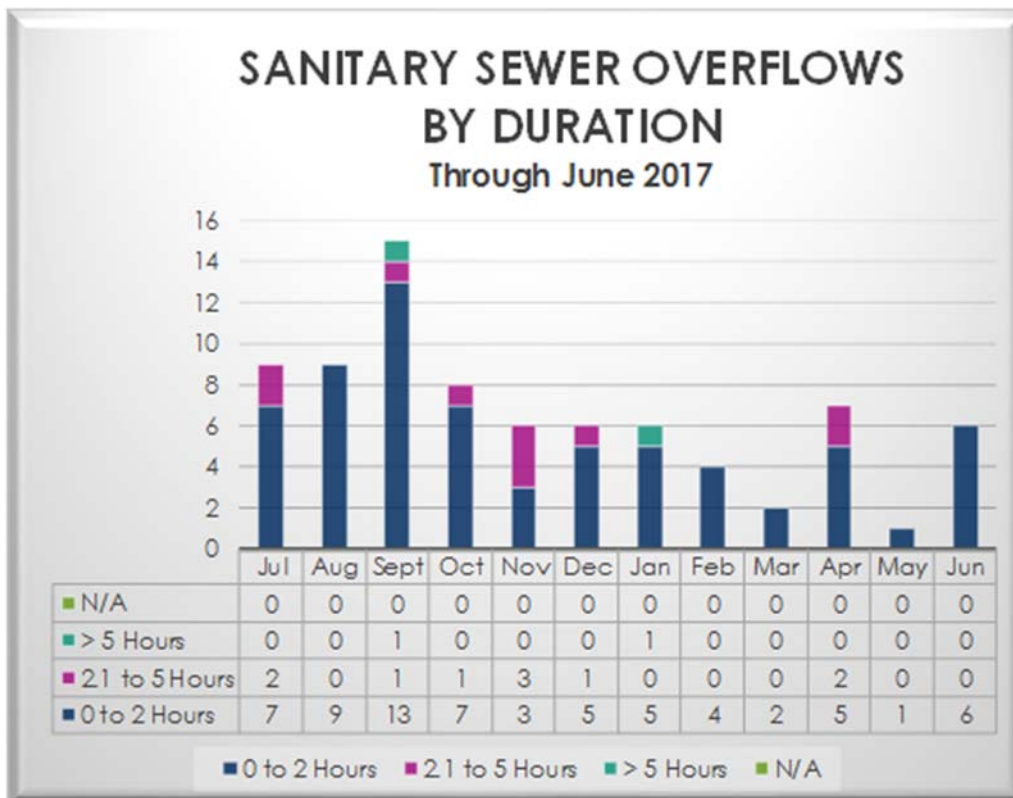
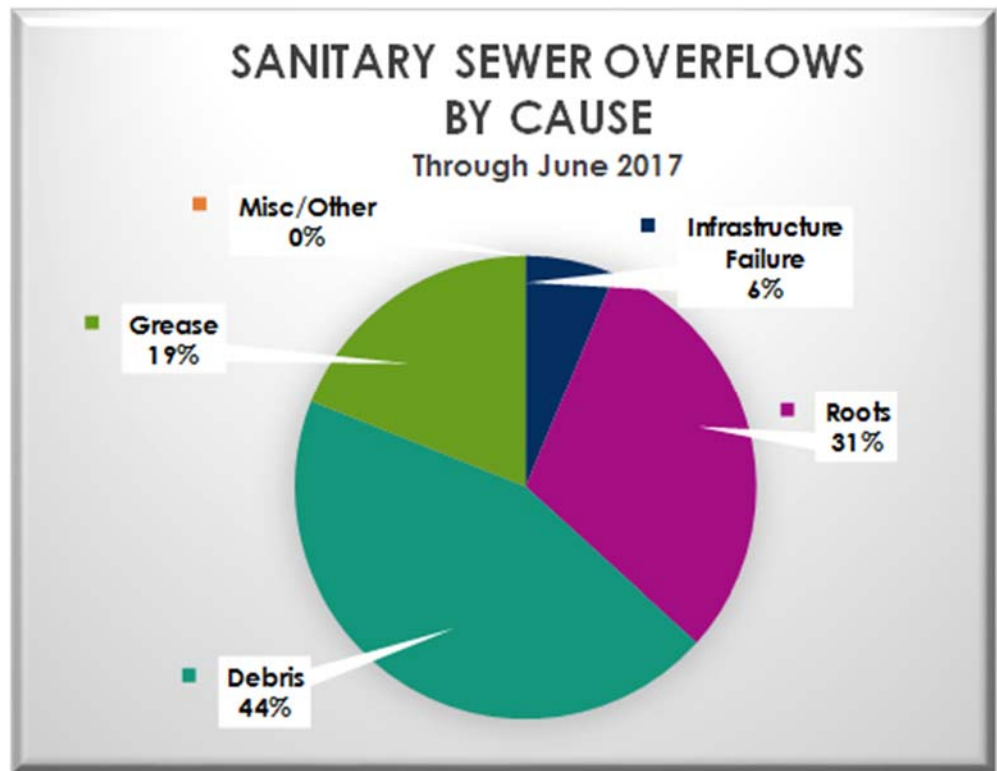


	July	Aug	Sept	Oct	Nov	Dec	Jan	Feb	Mar	Apr	May	June
Main Facility Usage	1,494,409	1,533,731	1,295,863	1,094,236	1,135,693	1,121,412	1,833,088	1,723,010	1,597,225	1,701,661	1,733,608	1,501,711
Tertiary Facility Usage	624,963	717,754	658,616	612,826	683,889	620,773	774,695	743,851	827,280	720,532	727,900	564,491
Total Usage	2,119,372	2,251,485	1,954,479	1,707,062	1,819,582	1,742,185	2,607,783	2,466,861	2,424,505	2,422,193	2,461,508	2,066,202
Co-Gen Production	684,552	588,394	422,109	61,117	0	0	613,602	563,330	624,942	1,784,673	1,895,103	494,833
Energy Purchased	1,434,820	1,663,091	1,532,370	1,645,945	1,819,582	1,742,185	1,994,181	1,903,531	1,799,563	637,520	566,405	2,066,202

MONTH



COLLECTIONS

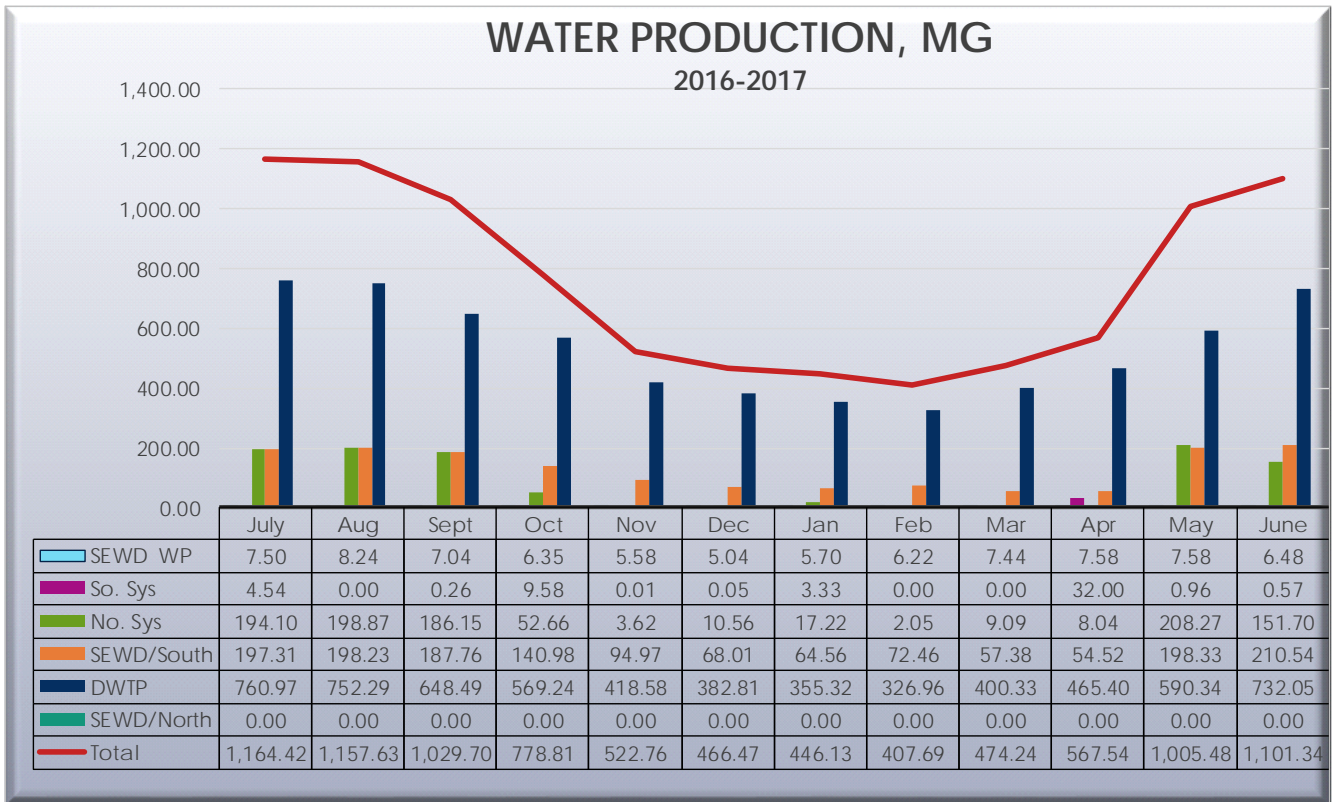




QUARTERLY OPERATIONS REPORT

4th Quarter, April - June 2017

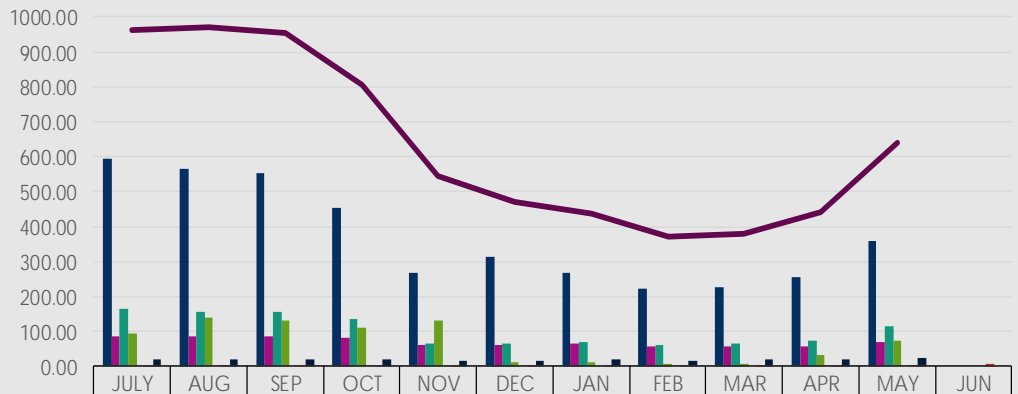
WATER



Meter Size	Residential	Industrial	Commercial & Institutional	Irrigation
5/8"	1798	0	16	15
3/4"	25096	14	212	72
1"	18782	0	251	152
1½"	258	0	233	157
2"	251	2	615	437
3"	12	0	68	25
4"	8	3	46	20
6"	5	1	17	2
8"	0	0	5	0
10"	0	0	2	0
12"	0	0	2	0
Totals	46210	20	1467	880
Total Number of Connections:			48,577	



CITY METERED CONSUMPTION, MG 2016-2017



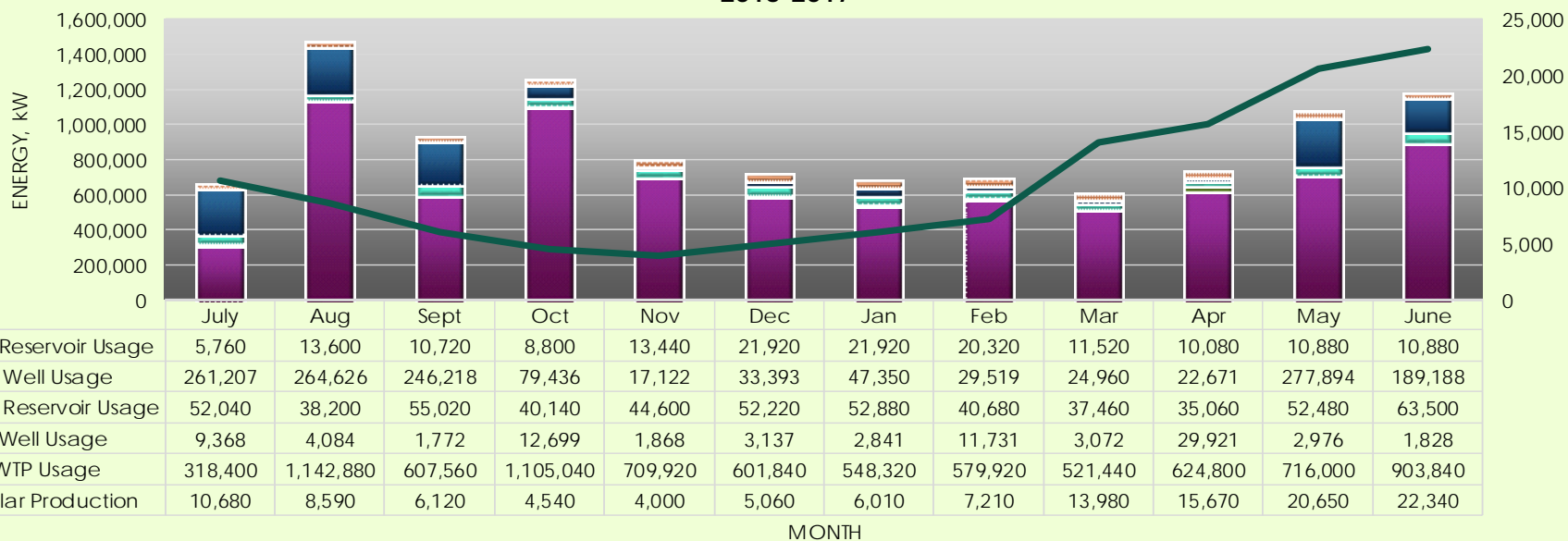
	JULY	AUG	SEP	OCT	NOV	DEC	JAN	FEB	MAR	APR	MAY	JUN
Single Family Residential	595.37	565.33	552.79	455.59	266.78	312.41	267.10	224.28	226.29	254.74	359.70	
Multi-family Residential	88.01	86.13	87.78	81.33	62.96	62.98	67.07	59.43	56.29	58.97	68.93	
Commercial/Institutional	163.39	155.67	157.97	135.88	63.63	63.63	69.99	61.23	66.68	74.98	114.53	
Irrigation	93.97	138.82	133.36	110.26	133.36	12.85	10.16	7.56	9.29	31.92	73.62	
Non-potable Water	0.00	0.00	0.00	0.00	0.00	0.00	0.00	0.00	0.00	0.00	0.00	
Const/Hydr/Jmpr/LC*	1.50	3.16	1.26	0.46	0.27	0.74	0.02	0.01	0.14	0.26	0.04	7.80
Other (Industrial)	21.30	20.86	22.23	21.69	17.64	17.64	21.89	17.28	21.25	20.75	23.05	
Total	963.54	969.97	955.39	805.21	544.64	470.25	436.23	369.79	379.94	441.62	639.87	

*June 2017 data not yet available.



WATER ENERGY CONSUMPTION

2016-2017



MONTH



QUARTERLY OPERATIONS REPORT

4th Quarter, April - June 2017

STORMWATER

PERMIT COMPLIANCE

PROGRAM/ACTIVITY	SMP GOAL	JUL	AUG	SEP	OCT	NOV	DEC	JAN	FEB	MAR	APR	MAY	JUN
Enforcement Actions													
<i>Administrative</i>													
No Action Taken													
Verbal Warning		10	8	7	6	9	14	5	7	9	10	9	5
Administrative Citation		0	3	0	0	0	0	3	1	0	1	1	2
Corrective Order		4	8	0	4	6	6	4	4	10	8	3	6
Notice to Clean		3	5	4	4	8	8	5	5	14	13	9	5
Notice of Violation		2	1	0	0	1	1	0	0	4	2	2	4
Stop Work Order													
Cease and Desist Order													
Referred to RWQCB		1	1	0	0	0	0	2	0	1	0	0	0
Not Available													
<i>Criminal Enforcement</i>													
Misdemeanor													
Infraction													
Inspections													
# of Potential Illicit Discharges		N/A	N/A	N/A	N/A	N/A	14	6	7	16	10	10	22
# Verified Illicit Discharges		N/A	N/A	N/A	N/A	N/A	2	0	2	6	2	3	3
Water Pollution Investigations													
# Complaints		N/A	N/A	N/A	N/A	N/A	10	7	12	16	2	4	1
# Verified		N/A	N/A	N/A	N/A	N/A	9	7	10	12	2	4	1
# Requiring Clean-Up		N/A	N/A	N/A	N/A	N/A	7	6	12	12	2	4	1
Training Activities													
Training Module		N/A	N/A	N/A	N/A	N/A	N/A	N/A	1	1	2	0	0
Training Module		N/A	N/A	N/A	N/A	N/A	N/A	N/A	N/A	N/A	0	0	0
Training Module		N/A	N/A	N/A	N/A	N/A	N/A	N/A	N/A	N/A	0	0	0
Public Outreach													
Educational Mat's Distributed		N/A	N/A	N/A	N/A	N/A	N/A	N/A	N/A	N/A			
Mixed Media Campaign		N/A	N/A	N/A	N/A	N/A	N/A	N/A	N/A	N/A			
Community-Wide Events		N/A	N/A	N/A	N/A	N/A	N/A	N/A	N/A	1	1	0	1
School Outreach		N/A	N/A	N/A	N/A	N/A	N/A	N/A	2	N/A	N/A	N/A	N/A
Business Outreach		N/A	N/A	N/A	N/A	N/A	1	2	3	3	0	0	



SUPPORT SERVICES

ENGINEERING

**COMING SOON
CIEMP UPDATES**



LAB

THREE SPECIES CHRONIC TOXICITY TESTING

WASTEWATER SAMPLE 4th Quarter	ALGAE	CERIODAPHNIA		LARVAL FATHEAD MINNOW	
		Survival	Reproduction	Survival	Reproduction
No Observable Effect Level, NOEL	100%	<100%	<100%	100%	100%
Toxicity Unit, TUc	1.0	1.0	1.0	1.0	1.0

Permit requires additional monitoring at >1TUc

COLIFORM TESTING

WATER COLIFORM MONITORING 4th Quarter	SAMPLES		POSITIVE RESULTS	
	# Required	# Taken	Total Coliform	E. Coli
April 2017				
North System	120	120	3*	3*
Walnut Plant	1	1	0	0
South System	24	24	0	0
May 2017				
North System	150	150	0	0
Walnut Plant	1	1	0	0
South System	30	30	0	0
June 2017				
North System	120	120	0	0
Walnut Plant	1	1	0	0
South System	24	24	0	0

Results >0 indicate contamination

*Resampled, results negative



ENVIRONMENTAL CONTROL

PROGRAM/ACTIVITY 2016-2017	JUL	AUG	SEP	OCT	NOV	DEC	JAN	FEB	MAR	APR	MAY	JUN
Pretreatment Program												
Industrial Inspections	26	38	36	32	34	50	37	53	66	42	36	39
Industrial Sampling	23	31	20	27	24	43	43	46	50	38	30	42
Discharge Permits Issued/Relssued	2	0	1	2	7	1	0	0	1	11	47	0
Pretreatment Enforcement Actions	1	11	6	3	5	6	7	4	3	1	3	
Waste Hauler Program												
Trucked-in Waste Loads	241	214	267	200	201	271	201	280	264	245	270	
Trucked-in Waste Gallons	749,656	679,794	836,275	657,711	643,084	839,922	666,352	851,720	836,560	784,126	834,284	
FOG Program												
FOG Initial Inspections	66	76	59	43	22	1	103	113	116	97	116	103
FOG Enforcement Actions	55	80	69	56	20	0	39	68	81	50	79	72
FOG Follow-up Inspections	25	45	37	35	28	25	13	16	39	47	43	49



CUSTOMER SERVICE

WATER

Taste / Odor

- April
 - 1- Strong chemical taste. Customer flushed connections and issue was resolved.
- May
 - 2- Strong chemical taste. Customer flushed connections and issue was resolved.
 - 1- Strong propane or gas odor only from kitchen and shower. Advised customer to clean P-trap and issue was resolved.
- June
 - 1- Air in lines. Notified the customer to flush connections and advised of possible sources of air entrapment. The issue was resolved.

Color

- April
 - 2- Discolored water. City crews had been flushing water lines in these areas. Customer flushed connections, and the problem was resolved.
- May
 - 4- Discolored water. Customer flushed connections, and the problem was resolved.
- June
 - 16- Discolored water. Excessive water hammer in the south service area. Water trucks for a large construction job were filling from fire hydrants and were stopping flow too quickly. The number of connections was limited, and the system was flushed. The problem was resolved.



Pressure

- April
 - 1 - Complaint of low pressure in the boiler room at County Hospital. Operator reported 57 psi at 8" backflow device. A hydrant near boiler room read 54 psi. Gauges inside boiler room read 42 and 30 psi. Maintenance personnel will have gauges checked.
 - 1 – Complaint of low pressure. Operator found customer house valve almost fully closed. Operator opened house valve, and pressure returned to normal.
- May
 - 3 – Complaints of low pressure inside the house. Operator observed angle stop or house valve partially closed. Pressure and volume normal after opening valves.
 - 1 – Complaint of low pressure at kitchen faucet. Operator advised cleaning aerators. Problem solved.
- June
 - 1 - Complaint of low pressure inside the house. Operator found house valve partially closed. Operator opened valve to resolve problem.
 - 2 – Complaint of low pressure. Operator observed normal pressure and flow at the front hose bib. Advised customer to clean aerators.

WASTEWATER

Service Calls

- April
 - The hydro/vac trucks cleaned approximately 144,000 linear feet of pipe.
- May
 - A root control contract was approved, and the contractor chemically treated many sewer lines throughout the City of Stockton.
- June
 - There was a large sinkhole caused by a damaged pipe which was repaired.

Spills / SSOs

- April
 - There were seven Category 3 spills throughout our service area.
- May
 - There was one Category 3 spill throughout our service area.
- June
 - There were six Category 3 spills throughout our service area.



STORMWATER

Enforcement Actions

- April
 - 1 Administrative Citation issued.
- May
 - 1 Administrative Citation issued.
- June
 - 2 Administrative Citations issued.

Flooding

- April
 - 71 – Calls for street flooding due to some rain events this month.



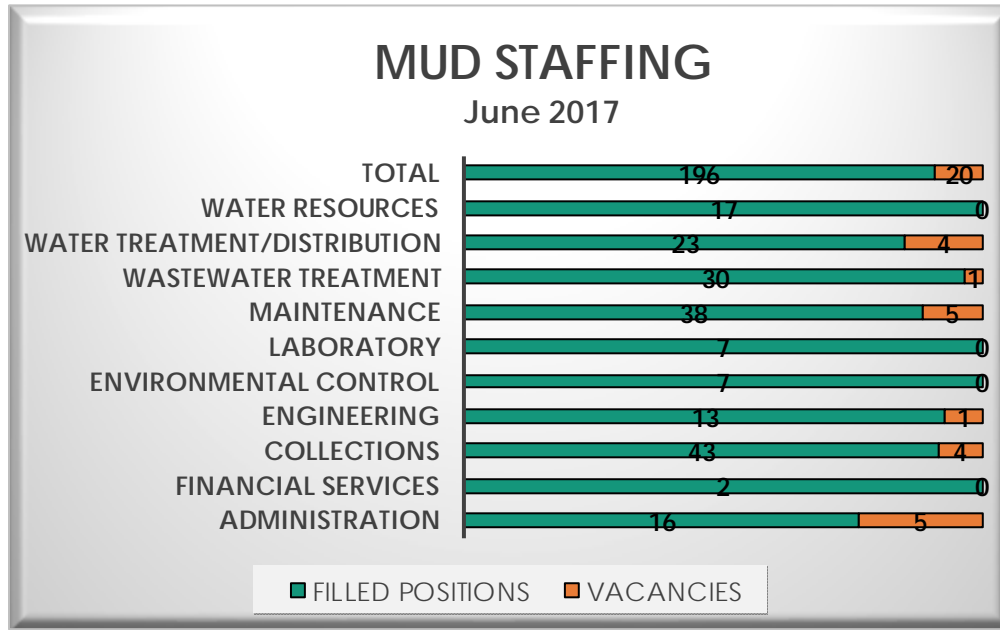
FINANCE

OPERATIONS & MAINTENANCE REVENUE/EXPENSE REVIEW

Through June 2017	WATER FUND			WASTEWATER FUND			STORMWATER FUND		
	FY 16-17 Budgeted	YTD Actual	Quarterly Actual	FY 16-17 Budgeted	YTD Actual	Quarterly Actual	FY 16-17 Budgeted	YTD Actual	Quarterly Actual
Revenues	\$39,627,926	44,045,102	(1,162,000)	\$68,644,329	64,612,443	9,127,995	\$5,990,295	5,591,665	1,527,947
Expenditures	\$52,385,434	36,228,661	2,540,296	\$65,860,721	63,251,360	27,934,659	\$6,380,878	5,583,504	1,926,949
Balance	(\$12,757,508)	7,816,441	(\$3,702,296)	\$2,783,608	\$1,361,083	(\$18,806,664)	(\$390,583)	\$8,161	(\$399,001)



ADMINISTRATION



SAFETY 2017													Calendar Year-To- Date*	
	Jan	Feb	Mar	Apr	May	Jun	Jul	Aug	Sept	Oct	Nov	Dec		
Reported Unsafe Acts	2	2	1	1	1	2								9
No-Fault Vehicle Accidents	1	0	1	0	1	0								3
At-Fault Vehicle Accidents	1	1	0	1	1	2								6
Total Vehicle Accidents	2	1	1	1	2	2	0	0	0	0	0	0	0	9
Total # Injuries & Accidents	2	1	1	2	0	1								7
Lost Time Events	2	0	0	1	0	1								4
Work Restriction Events	2	1	0	1	0	0								4
Total OSHA Reportable Events	4	1	0	2	0	1	0	0	0	0	0	0	0	8

*OSHA reporting is on a calendar year