

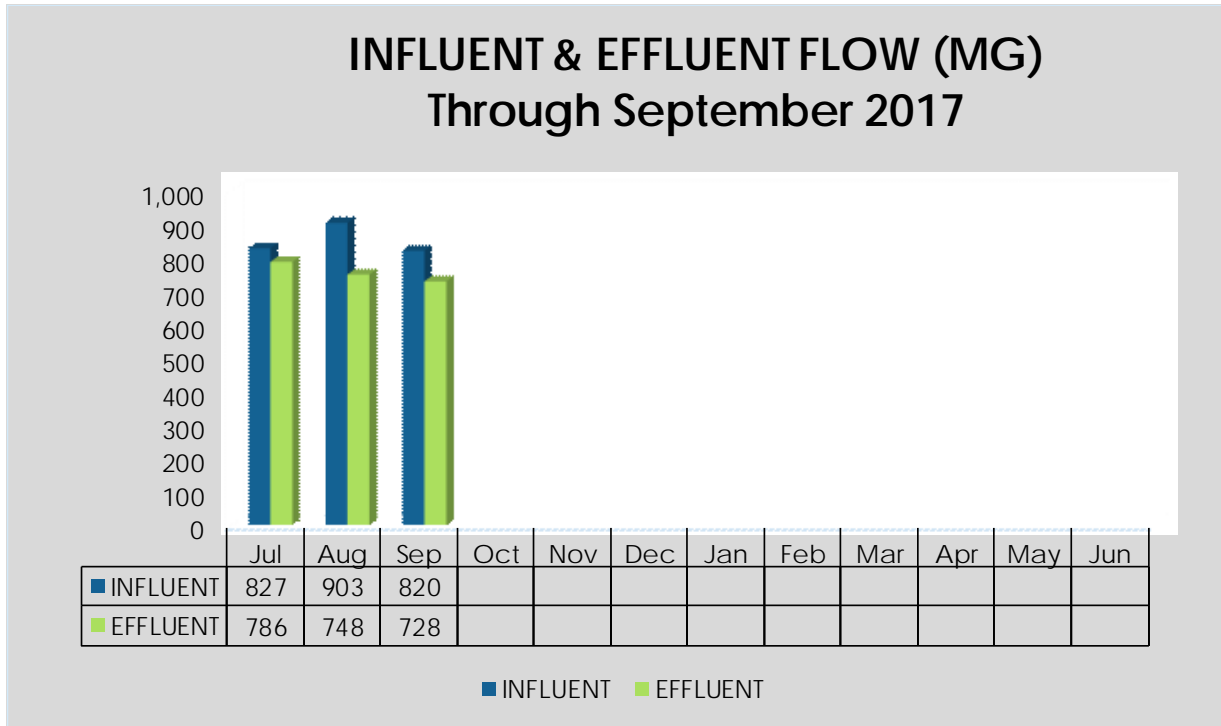


QUARTERLY OPERATIONS REPORT

1st Quarter, July - September 2017

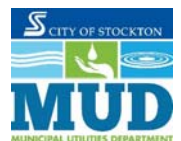
WASTEWATER

PERMIT COMPLIANCE



INFLUENT MONTHLY AVERAGE				EFFLUENT MONTHLY AVERAGE									
Month	Flow MGD	CBOD mg/L	TSS mg/L	Month	Flow MGD	cBOD mg/l	cBOD Removal %	TSS mg/l	TSS Removal %	Ammonia* mg/l	Turbidity NTU	pH	Dissolved Oxygen mg/l
				Permit Limit	≤55	<10	>85	<10	>85	≤1.2	<2	6.5-8.5	>6
July	26.7	350	320	July	25.4	<2.0	>99.4	<2.8	>99.2	<0.7	1.2	6.7-7.8	8.4
August	29.1	370	340	August	24.1	<2.1	>99.5	<3.0	>99.2	<0.6	1.4	6.7-7.6	8.4
September	27.3	380	370	September	24.3	<2.0	>99.6	<3.5	>99.2	<0.7	1.5	6.5-7.2	8.8
October				October									
November				November									
December				December									
January				January									
February				February									
March				March									
April				April									
May				May									
June				June									

*Seasonal limits exist for Ammonia. Permit limit shown is specific for this reporting period.





WASTEWATER ENERGY CONSUMPTION/PRODUCTION

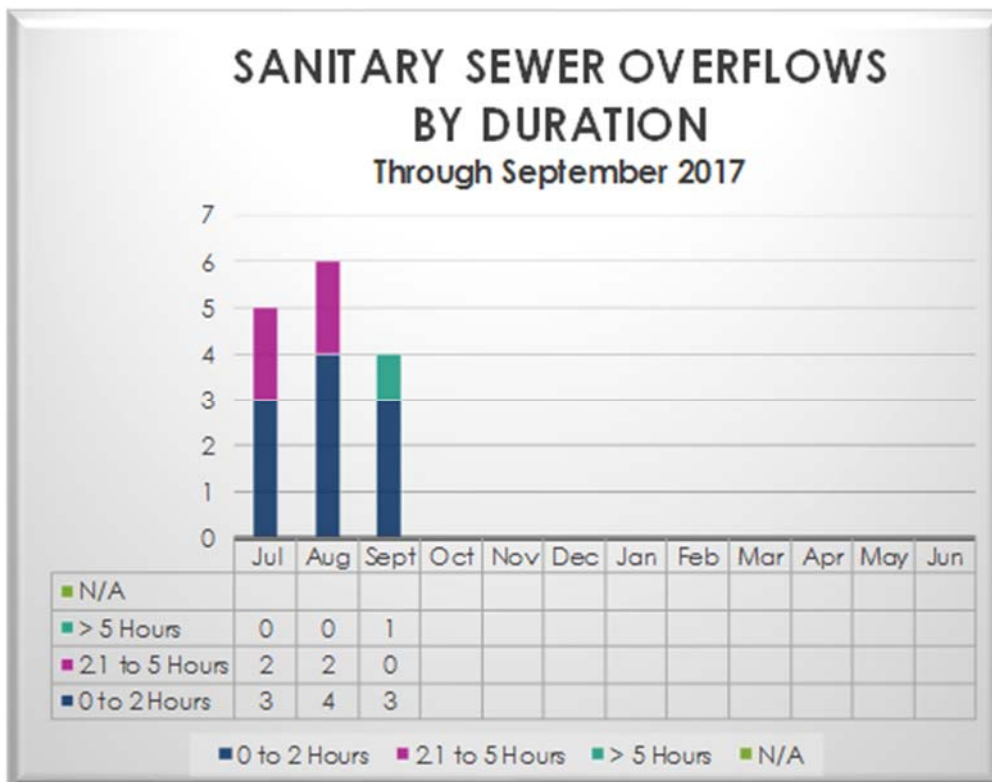
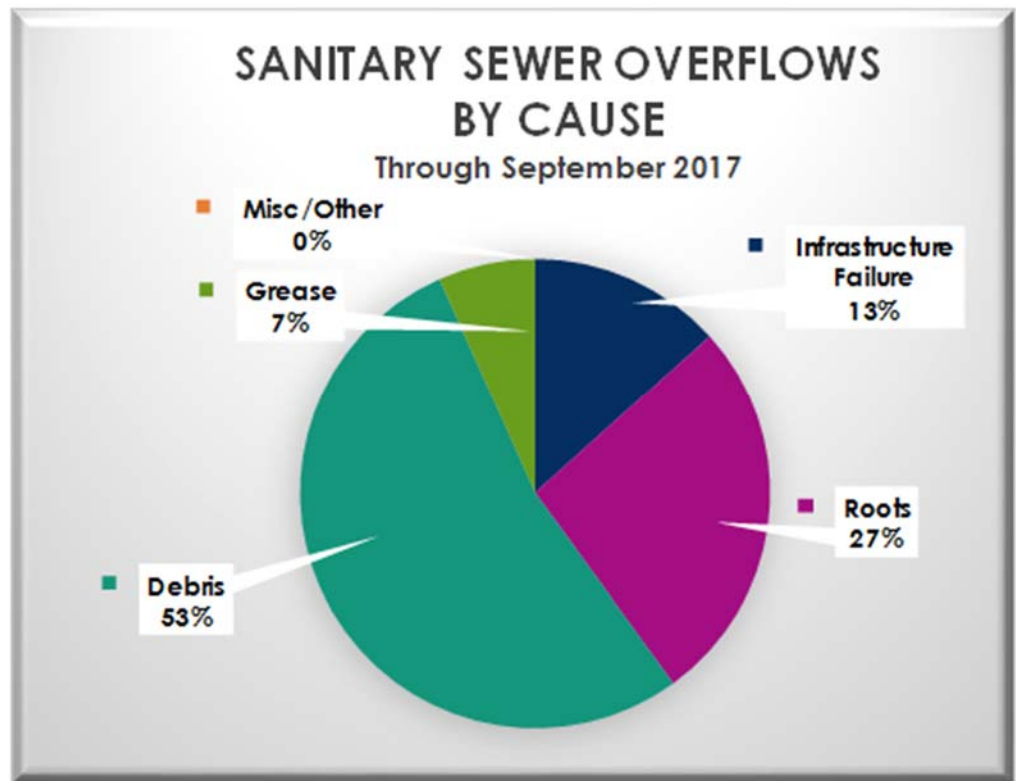
2017-2018



■ Main Facility Usage	1,834,903	1,695,238	1,686,621									
■ Tertiary Facility Usage	801,693	755,981	572,738									
— Total Usage	2,636,596	2,451,219	2,259,359									
— Co-Gen Production	558,183	605,731	516,873									
— Energy Purchased	2,078,413	1,845,488	1,741,486									



COLLECTIONS

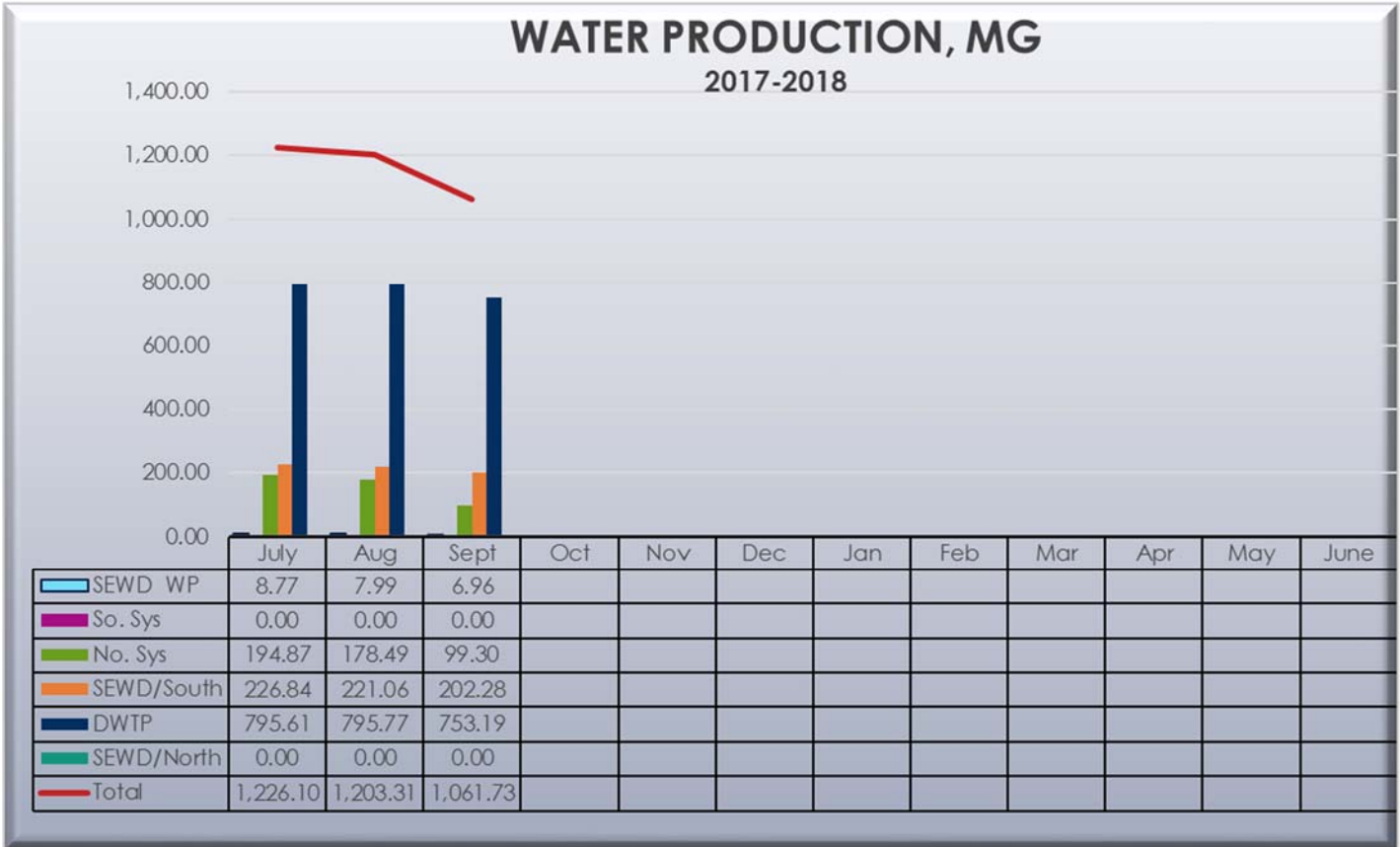




QUARTERLY OPERATIONS REPORT

1st Quarter, July - September 2017

WATER



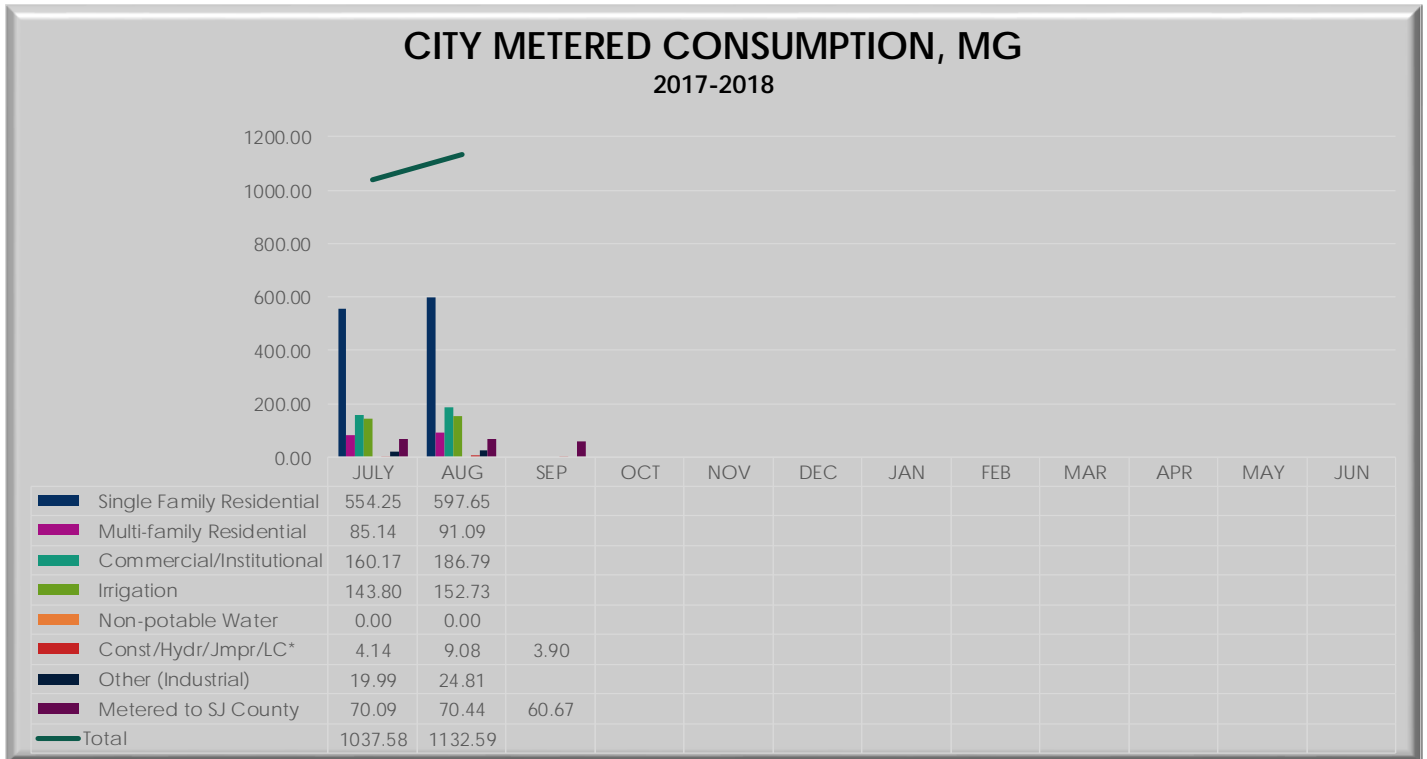
Meter Size	Residential	Industrial	Commercial & Institutional	Irrigation
5/8"	1793	0	16	15
3/4"	25036	14	214	72
1"	18895	0	252	152
1½"	259	0	231	160
2"	250	2	616	438
3"	14	0	68	25
4"	6	3	46	20
6"	5	1	17	2
8"	0	0	5	0
10"	0	0	2	0
12"	0	0	2	0
Totals	46258	20	1469	884
Total Number of Connections:			48,631	



QUARTERLY OPERATIONS REPORT

1st Quarter, July - September 2017

WATER

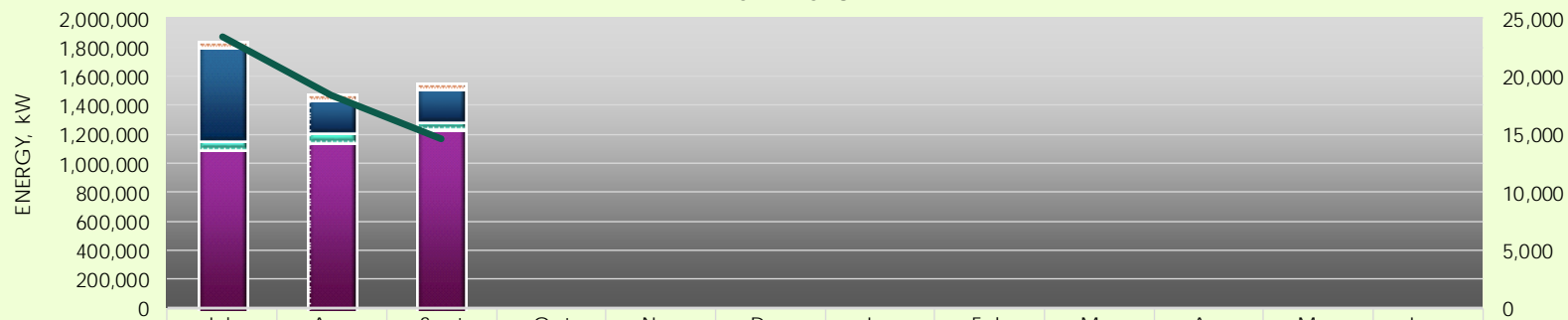


*September data not available due to billing cycle.



WATER ENERGY CONSUMPTION

2017-2018



	July	Aug	Sept	Oct	Nov	Dec	Jan	Feb	Mar	Apr	May	June
S. Reservoir Usage	10,240	11,040	10,080									
N. Well Usage	647,024	226,501	221,423									
N. Reservoir Usage	51,720	67,460	48,920									
S. Well Usage	2,393	1,909	6,700									
DWTP Usage	1,115,520	1,156,400	1,248,800	0	0	0	0	0	0	0	0	0
Solar Production	23,450	18,350	14,660									



QUARTERLY OPERATIONS REPORT

1st Quarter, July - September 2017

STORMWATER

PERMIT COMPLIANCE

PROGRAM/ACTIVITY	SMP GOAL	JUL	AUG	SEP	OCT	NOV	DEC	JAN	FEB	MAR	APR	MAY	JUN
Enforcement Actions													
<i>Administrative</i>													
No Action Taken													
Administrative Citation		1	0	0									
Corrective Order		5	7	4									
Notice to Clean		5	6	5									
Notice of Violation		5	11	5									
Stop Work Order		0	0	0									
Cease and Desist Order		0	0	0									
Referred to RWQCB		0	1	0									
Not Available													
<i>Criminal Enforcement</i>													
Misdemeanor		0	0	0									
Infraction		0	0	0									
Inspections													
# of Potential Illicit Discharges		5	11	5									
# Verified Illicit Discharges		0	0	0									
Water Pollution Investigations													
# Complaints		0	2	0									
# Verified		0	2	0									
# Requiring Clean-Up		0	0	0									
Training Activities													
Training Module		0	0	0	0								
Training Module		0	0	0	0								
Training Module		0	0	0	0								
Public Outreach													
Educational Mat's Distributed		0	0	0	1								
Mixed Media Campaign		0	0	0	0								
Community-Wide Events		0	0	2	0								
School Outreach		0	0	0	0								
Business Outreach		0	0	0	0								



SUPPORT SERVICES

ENGINEERING

**COMING SOON
CIEMP UPDATES**



LAB

THREE SPECIES CHRONIC TOXICITY TESTING

WASTEWATER SAMPLE 1st Quarter	ALGAE	CERIODAPHNIA		LARVAL FATHEAD MINNOW	
		Survival	Reproduction	Survival	Reproduction
No Observable Effect Level, NOEL	100%	<100%	<100%	100%	100%
Toxicity Unit, TUc	1.0	>1	>1	1.0	1.0

Permit requires additional monitoring at >1TUc

COLIFORM TESTING

WATER COLIFORM MONITORING 1st Quarter	SAMPLES		POSITIVE RESULTS	
	# Required	# Taken	Total Coliform	E. Coli
July 2017				
North System	120	120	1	0
Walnut Plant	1	1	0	0
South System	24	24	0	0
August 2017				
North System	150	150	0	0
Walnut Plant	1	1	0	0
South System	30	30	0	0
September 2017				
North System	120	120	0	0
Walnut Plant	1	1	0	0
South System	24	24	0	0

Results >0 indicate contamination



ENVIRONMENTAL CONTROL

PROGRAM/ACTIVITY 2017-2018	JUL	AUG	SEP	OCT	NOV	DEC	JAN	FEB	MAR	APR	MAY	JUN
Pretreatment Program												
Industrial Inspections	44	46	46									
Industrial Sampling	54	54	33									
Discharge Permits Issued/Relssued	0	1	0									
Pretreatment Enforcement Actions	6	5										
Waste Hauler Program												
Trucked-in Waste Loads	259	242										
Trucked-in Waste Gallons	794,577	787,360										
FOG Program												
FOG Initial Inspections	110	50	4									
FOG Enforcement Actions	65	38	17									
FOG Follow-up Inspections	43	41	13									



CUSTOMER SERVICE

WATER

Taste / Odor

- July
 - No taste and odor complaints received.
- August
 - No taste and odor complaints received.
- September
 - Taste complaint of bitter water. Problem was identified as in home filter.
 - Three varying smell complaints were resolved with in home flushing of lines.

Color

- July
 - Seven water color complaints of which six were related to flushing or in home maintenance activities. One complaint was hard water staining fixtures in the bathroom.
- August
 - Three water color complaints were received for blackish water. All complaints were resolved and determined to be caused by in home water softener units.
- September
 - Two color complaints of brown to black colored water. Advised customers to flush the home which resolved the issue.



Pressure

- July
 - Two pressure complaints. One it was noted that construction work was using a fire hydrant in the area and operator spoke to the customer how this could cause drops in pressure. One complaint of high pressure on toilet fixture fill hose. Customer to regulate pressure by closing their home valve down.
- August
 - One complaint of low pressure throughout house. Operator found house valve partially closed. Operator opened valve fully to restore normal flow and pressure.
 - One complaint of low pressure throughout house. Operator observed a leak between house and meter and notified customer to make repairs.
 - Two complaints of low pressure inside house. Meter and house valve ok. Customer to clean inside aerators.
 - One complaint of low pressure. Outside pressure and flow normal. Operator spoke to customer and advised checking inside fixtures and cleaning aerators.
- September
 - Two complaints of low pressure. Pressure was 56 psi with the house valve partially closed. Operator opened house valve and issue resolved.
 - Three complaints of low pressure. Homes showed 37-43 psi on home regulators. Advised customer to have regulators serviced.



WASTEWATER

Service Calls

- July
 - The cleaning crew cleaned a total of 310 sewer pipe line segments at the total of 112,283 feet.
- August
 - The Underground Service Alert (USA) crew responded to 1016 calls this month.
- September
 - The construction crews repair nine laterals and seventy-six feet of sewer lines this month.

Spills / SSOs

- July
 - There were five sanitary sewer overflows this month in our service area.
- August
 - There were six sanitary sewer overflows this month in our service area.
- September
 - There were four sanitary sewer overflows this month in our service area.



STORMWATER

Enforcement Actions

- July
 - Five Correction Orders, five Notice to Clean, and five Notice of Violations were issued.
- August
 - Seven Correction Orders, six Notice to Clean, and eleven Notice of Violations were issued.
- September
 - Four Correction Orders, five Notice to Clean, and five Notice of Violations were issued.
 - One referral to the Regional Water Quality Board.

Flooding

- July
 - No reported incidents of flooding.
- August
 - No reported incidents of flooding.
- September
 - No reported incidents of flooding.



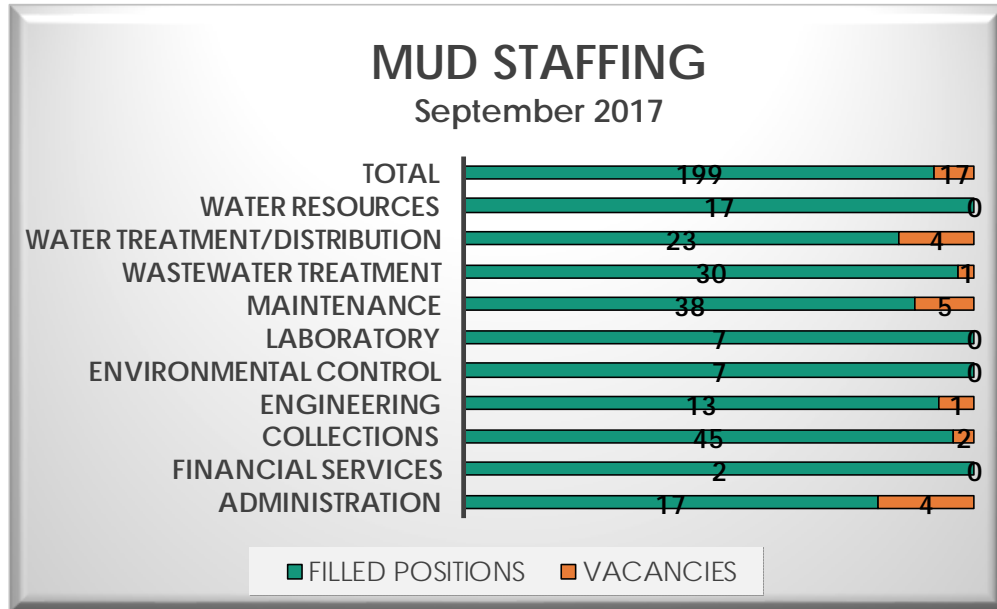
FINANCE

OPERATIONS & MAINTENANCE REVENUE/EXPENSE REVIEW

July through September 2017	WATER FUND			WASTEWATER FUND			STORMWATER FUND		
	FY 17-18 Budgeted	YTD Actual	Quarterly Actual	FY 17-18 Budgeted	YTD Actual	Quarterly Actual	FY 17-18 Budgeted	YTD Actual	Quarterly Actual
Revenues	\$49,919,035	16,274,150	16,274,150	\$73,001,080	20,684,324	20,684,324	\$7,286,706	2,683,661	2,683,661
Expenditures	\$51,031,449	13,067,823	13,067,823	\$69,015,390	24,441,933	24,441,933	\$6,926,651	1,425,754	1,425,754
Balance	(\$1,112,414)	3,206,326	\$3,206,327	\$3,985,690	(\$3,757,609)	(\$3,757,609)	\$360,055	\$1,257,906	\$1,257,906



ADMINISTRATION



SAFETY 2017	Jan	Feb	Mar	Apr	May	Jun	Jul	Aug	Sept	Oct	Nov	Dec	Calendar Year-To- Date*
Reported Unsafe Acts	2	2	1	1	1	2	0	3	1				13
No-Fault Vehicle Accidents	1	0	1	0	1	0	0	1	0				4
At-Fault Vehicle Accidents	1	1	0	1	1	2	0	3	1				9
Total Vehicle Accidents	2	1	1	1	2	2	0	4	1	0	0	0	13
Total # Injuries & Accidents	2	1	1	2	0	1	1	4	0				12
Lost Time Events	2	0	0	1	0	1	1	4	0				9
Work Restriction Events	2	1	0	1	0	0	1	2	0				7
Total OSHA Reportable Events	4	1	0	2	0	1	2	6	0	0	0	0	16

*OSHA reporting is on a calendar year